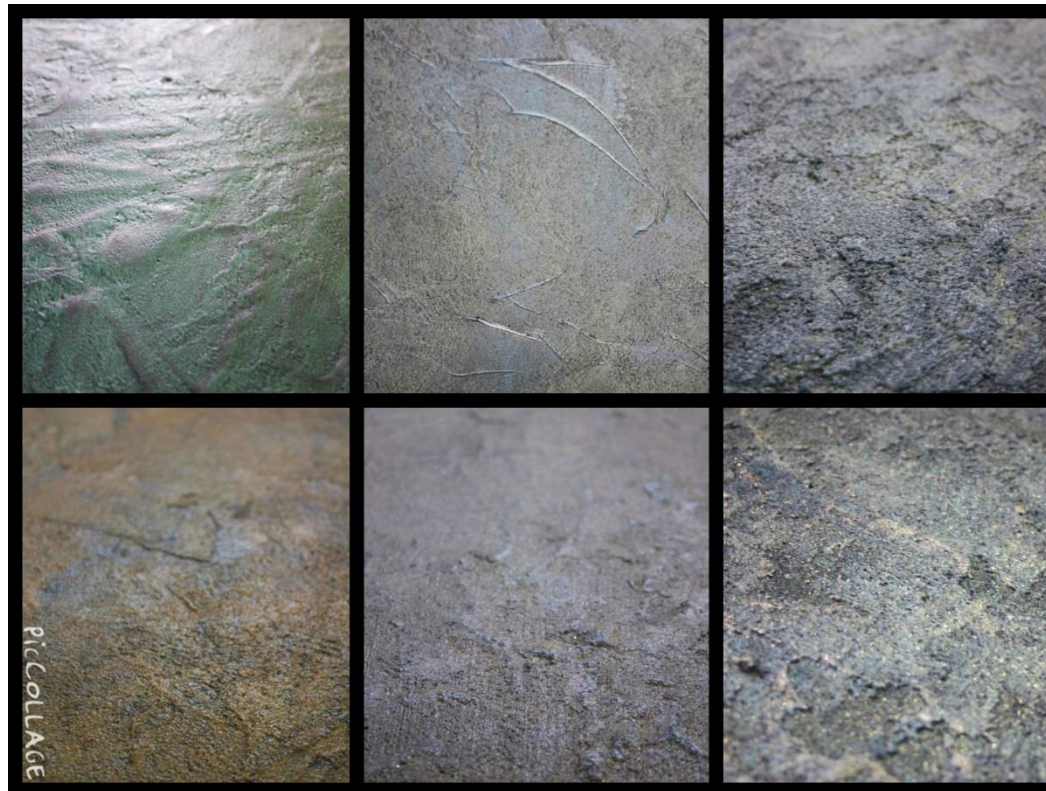


RESIN Art "DUO EFFECTS"

**One component, ecologic and water based "Duo Effect" System
for interiors/exterior walls, floors and shower surfaces**

Here below we suggest a series of application cycles: however, a variety of original effects are obtainable
by following different application techniques.






1st step is common to all cycles: PRIMER RV 041 Stuc Art Vir by roller (if need be, fill in the grout lines with stuc)

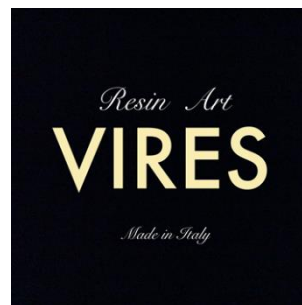
Drying time: about 4 h

		Yield:
	<p>RV000 Top Finish - Fine</p> <ol style="list-style-type: none"> 1) RV 001 by spatula 2) RV 000 by spatula: very fine effect for floorings. Sand to obtain an ideal effect for kitchen top, furniture coating, bathroom surfaces, etc. 3) Add RV060 (glazing) 4) Apply two layers of RV 050 	<p>Yield for m2 for first layer RV 001 1200-1300 gr/m2 Yield for m2 for second layer RV 000 300 - 400 gr/m2</p> <p>Top Finish fine effect cycle: Primer RV 041 Stuc Art Vir + RV 001 + RV 000 + RV 060 vela art + finishing anti-scratch RV 050</p>
		Yield:
	<p><u>TONO SU TONO</u></p> <ol style="list-style-type: none"> 1) RV 001 by spatula 2) RV 001 by spatula fine effect 3) Sanding of second layer 4) Apply RV 060 (glazing) 5) Apply two layers of RV 050 	<p>Yield for m2 for first layer RV 001 1000-1200 gr/m2 Yield for m2 for second layer RV 001 600 - 700 gr/m2</p> <p>Tono su Tono effect cycle: Primer RV 041 Stuc Art vir + RV 001 + RV 001+ RV 060 vela art + finishing anti-scratch RV 050</p>

		Yield:
	<p style="text-align: center;"><u>MATERICO</u></p> <ol style="list-style-type: none"> 1) RV 002 by Spatula 2) RV 003 by Spatula, higher thickness, textured effect with high granulometry, for Materico effects 3) Apply RV 060 (glazing) 4) Apply two layers of RV 050 	<p>Yield for m2 for first layer RV 002 1000 -1200 gr/m2</p> <p>Yield for m2 for second layer RV 003 600 - 700 gr/m2</p> <p>Materico effect cycle: Primer RV 041 Stuc Art vir + RV 002 + RV 003 + RV 060 vela art + finishing anti-scratch RV 050</p>
		Yield:
	<p style="text-align: center;"><u>SPATOLATO</u></p> <ol style="list-style-type: none"> 1) RV 001 by Spatula 2) RV 001 by spatula, for Spatolato effect 3) Apply RV 060 4) Apply two layers of RV 050 	<p>Yield for m2 for first layer RV 001 1200-1300 gr/m2</p> <p>Yield for m2 for second layer RV 001 800 - 900 gr/m2</p> <p>Spatolato effect cycle: Primer RV 041 Stuc Art vir + RV 001 + RV 001 + RV 060 vela art + finishing anti-scratch RV 050</p>

		Yield:
	<p style="text-align: center;"><u>GRAPHITO</u></p> <ol style="list-style-type: none"> 1) RV 004 by roller 2) RV 003 by spatula for Graphito, very elegant and sophisticated, ideal for floorings and coatings in general 3) Apply RV 060 (glazing) 4) Apply two layers of RV 050 	<p>Yield for m2 for first layer RV 004 1,200 -1,300 kg/m2</p> <p>Yield for m2 for second layer RV 003 800 - 900 gr/m2</p> <p>Graphito effect cycle: Primer RV 041 Stuc Art vir + RV 004 + RV 003 + RV 060 vela art + finishing anti-scratch RV 050</p>
		Yield:
	<p style="text-align: center;"><u>INTRECCIO</u> cycle for Floorings</p> <ol style="list-style-type: none"> 1) RV 004 by roller: building thickness, Apply first render, to obtain strength and hold for floorings, with thickness of about 1 mm. 2) RV 005 gel/brush: by spatula/roller/brush to obtain a light thickness. RV 005 is a relief render, which allows creating and obtaining the desired design and projects. 3) Apply RV 060 (glazing) 4) Apply two layers RV 050 	<p>Yield for m2 for first layer RV 004 800 - 1000 gr/m2</p> <p>Yield for m2 for second layer RV 005 500 - 600 gr/m2</p> <p>Intreccio effect cycle: Primer RV 041 Stuc Art vir + RV 004 + RV 005 + RV 060 vela art + finishing anti-scratch RV 0050</p>



		Yield:
	<p style="text-align: center;"><u>INTRECCIO</u> cycle for Walls and Mural surfaces</p> <ol style="list-style-type: none"> 1) For wall surfaces, where there is less need for resistance compared to floors, we suggest a wall surface fixative RV 040 2) RV 005 a roller/spatula/brush 3) Apply RV 060 (glazing) 4) Apply two layers of RV 050 	<p>Yield for m2 for first layer RV 005 500 – 600 gr/m2</p> <p>Spatulate effect cycle: Primer RV 040 Murofix Art Vir + RV 005 + RV 060 vela art + finishing anti-scratch RV 0050</p>




DECORATIVE FOR WALL SURFACES – “MATERIAL”

Continuous, ecological and acrylic decorative plastering for walls, low thickness finishing, formulated with a mineral base,
Composed of lime and natural pigments.



		Yield:
	<p><u>MATERIAL – Stone</u></p> <ol style="list-style-type: none"> 1) Apply primer by roller – 4 h drying time 2) Apply RV 081 Material with toothed spatula 3) Smooth with spatula 4) Design stone-like grooves with the proper stamp (pictures) 5) Let dry 4-8 h 6) Spray with water and Smooth lightly with spatula to obtain an even and polished surface 7) Apply glazing with gel RV 061 Velagel 	<p>RV 081 Material single layer: 1,5-2kg / m2</p>
		Yield:
	<p><u>MATERIAL – Nature</u></p> <ol style="list-style-type: none"> 1) Apply primer a roller – 4 h drying time 2) Apply RV 081 Material with toothed spatula 3) Smooth with spatula 4) Design lines with the proper instrument (pictured) to obtain a cane-like look 5) Let dry 4-8 h 6) Spray with water and Smooth lightly with spatula to obtain an even and polished surface 7) Apply glazing with gel RV 061 Velagel 	<p>RV 081 Material single layer: 1,5-2kg / m2</p>

		Yield:
	<p><u>MATERIAL – Oriental</u></p> <ol style="list-style-type: none"> 1) Apply primer a roller – 4 h drying time 2) Apply RV 081 Material with a toothed spatula 3) Smooth with spatula 4) Design lines with the proper stamp (pictured) 5) Let dry 4-8 h 6) Spray with water and Smooth lightly with a spatula to obtain an even and polished surface 7) Apply glazing with gel RV 061 Velagel 	<p>RV 081 Material single layer: 1,5-2kg / m²</p>

Nomenclature
RV 041 Stuc Art Vir - stuc primer for grout lines, tiles, wood, concrete
RV 000 Top finish - very fine ecological Smooth render, ideal for bathrooms and kitchen tops
RV 001 Tono su Tono - fine ecological render
RV002 Materico – Medium texture ecological render
RV003 Spatulato – Medium-thick texture ecological render
RV004 Graphito – Medium-fine texture ecological render
RV005 Intreccio for walls /floorings – ecological relief render (by roller)
RV040 Murifix Art Vir – Acrylic fixative resin for walls, internal/external
RV060 VelArt – resin glazing, various effects and colours –walls and floorings
RV050 Resina Top Art Clear - Resin finishing anti-scratch and hydro repellent
Suggested Cycle for shower interior: RV 041 +RV002+RV003+RV060+RV050
RV 081 Material: Continuous, ecological and acrylic decorative plastering for walls
RV 061 Velagel: glazing in gel, various tones and colours